

CHORTEN

STUPA EDITION ♦ N^o.24

The Great Stupa of Universal Compassion is being built near Atisha Centre in Australia. It will be the same size and design as the Great Stupa of Gyantse in Tibet. This will make it the largest Stupa in the Western world.

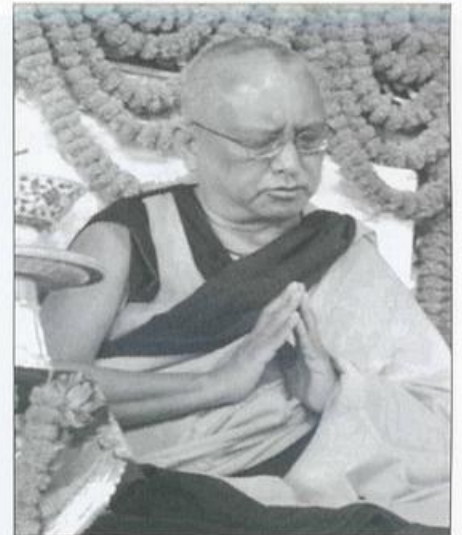
LAMA ZOPA RINPOCHE TO VISIT

We are delighted to confirm that Kyabje Lama Zopa Rinpoche will bless us with a visit to the Great Stupa and Atisha Centre on Sunday June 4 and Monday June 5.

The program begins at 2.30pm June 4 when Lama Zopa Rinpoche and many Sangha view the Great Stupa site. This will include a blessing ceremony and the unveiling of a commemorative bronze plaque. The party will then move to the Great Stupa Exhibition Centre to view the wonderful 4 metre high Guru Rinpoche statue (and marble Kwan Yin statue). Afternoon tea will be served to Sangha at the Great Stupa Exhibition Centre prior to viewing the sacred relics and holy objects and a viewing of the major Art Exhibition "Visions of Tibet".

At 7.30 pm that night Rinpoche will deliver a talk on Buddha Nature as a special commemoration of Atisha Centre's 25th anniversary.

At 7 pm Monday June 5 Rinpoche will conduct a 21 Tara Initiation at Atisha Centre Gomba.



A sample from each of the artists work that can be seen at the Great Stupa Exhibition Centre from April 8.

VISIONS OF TIBET ART EXHIBITION

The Visions of Tibet Art Exhibition will be held at the Great Stupa Exhibition Centre between April 8 - June 12.

Celebrating 2006 The Year of Tibet the exhibition will be opened by George Farley, Chairman of the Australia Tibet Council 2pm Saturday April 8. The exhibition showcases the magnificent deity and landscape paintings of Karma Phuntsok, Melbourne artist John Westmore & Tibetan photographs of American artist, Carole Elchert, entry is free and all works are for sale with proceeds going to the Great Stupa.

NEXT CONSTRUCTION PHASE GETS GO AHEAD

The next phase of the construction of the Great Stupa, the erection of the main steel framework will go ahead thanks to donations of over \$30,000 and a loan of \$500,000 from Bendigo Bank.

The bank loan has been made possible due to the bank guarantees of \$250,000 each provided by The City of Greater Bendigo and two very generous supporters.

Bendigo Bank should be applauded for their flexibility and help in finding the best way to make the loan a reality. The Great Stupa also recognises the support of Industrial Galvanisers and GFC Industries in providing the steel and galvanising at less than market prices.

Construction of the main steel framework of the Great Stupa is expected to have begun by the time of Lama Zopa's visit in June of this year.

JADE BUDDHAS FOR BENEFACTORS

Our Jade Buddha project is to create the world's largest jade Buddha from a flawless boulder of jade.

Donors to the Jade Buddha Project will receive a gift of a jade Buddha – made from Polar Jade. These will vary in accord with the size of the donation:

3 cm high (\$108), 4 cm high (\$180), 5 cm high (\$250),

7.5 cm high (\$500), 10 cm high (\$1,000),

15cm high (\$2,500), 20cm high (\$5,000),

30cm high (\$10,000).

JADE MALAS NOW AVAILABLE

Magnificent polar jade malas can be obtained from the Great Stupa office.

108 bead malas are available for a donation of AUS \$250, 21 bead(8mm) wrist malas are available for AUS \$80, 21 bead(10mm) wrist malas are available for AUS\$98. The malas are produced from AAA Gem-quality Polar Jade.

Enquiries should be addressed to

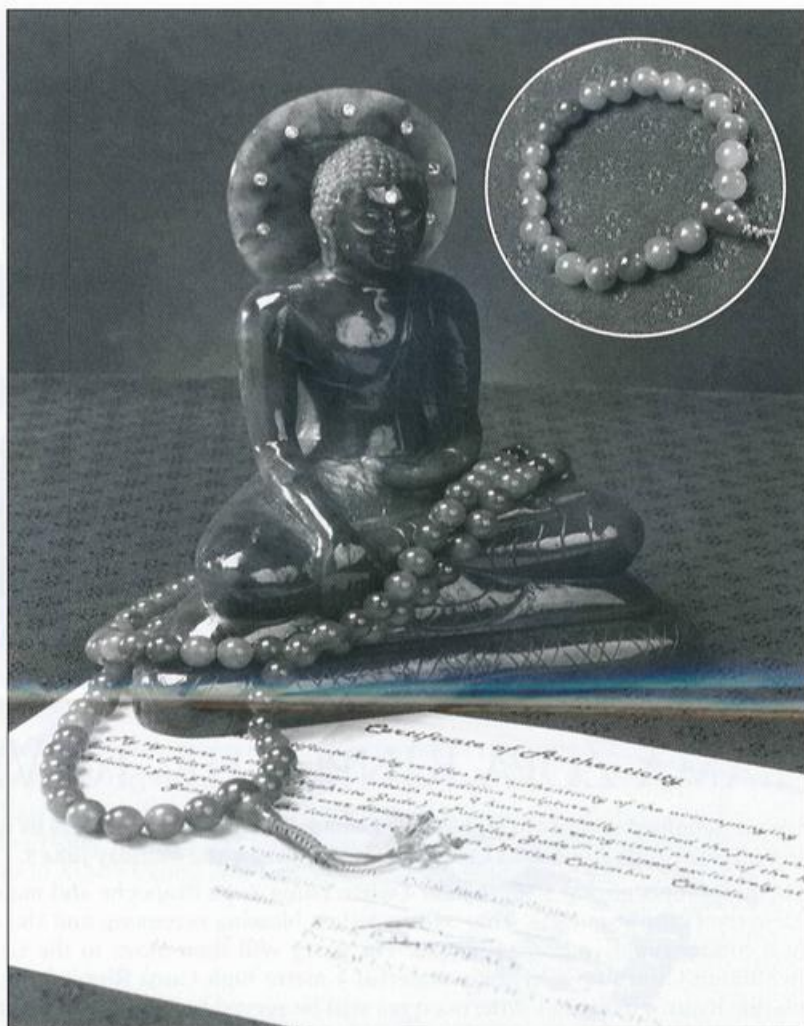
Judy Green

The Great Stupa,

43 View Street

Bendigo VIC 3550 Australia.

E-mail judy@stupa.org.au



Beautiful Jade Buddhas and Jade Malas now available

WORKING BEE AT GREAT STUPA EXHIBITION CENTRE

Can you help us with a working bee at the exhibition site 10 am to 4 pm Saturday April 29. There are lots of jobs including clearing up the dried grass in the car park, chopping fire wood for winter (BYO chain saw). Venerable Lozang Tenzin has offered to cook a dahl & rice lunch.

Please phone for lunch bookings 5444 0423.

REJOICE! BUDDHA-BASE BROTHERS AND SISTERS ALL FOUND

With the contribution of the latest benefactor, Hendra Taniwijaya, the Buddha-base brothers and sisters have all been found. Many thanks to all benefactors.



Some of the Kwan Yin statues offered from Singapore and Brisbane.

SYDNEY HOLY RELIC TOUR 2006

The Great Stupa Holy Relic Tour of Sydney will be held over three weeks from August 6 to 27, 2006.

The tour will commence at the Van An Meditation Centre 215-223 Redmayne Road Horseley Park, Sydney and will then transfer to a location in Sydney's China Town. The Abbot of Van An centre, Thich Quang Nghiem, is looking forward to the tour being a major dharma activity that involves many Buddhist traditions.

If you can help the tour in anyway please contact the Great Stupa Holy Relic Tour Coordinator, Catherine Dinh at: relicssydney@yahoo.com.au

DO YOU HAVE A KWAN YIN OR CHENREZIG YOU CAN OFFER FOR OUR SHRINE OF COMPASSION?

We are planning to have many Kwan Yin statues and Chenrezig images in the Great Stupa Shrine of Compassion. Other symbols of compassion including St Francis of Assisi will also be represented.

If you can donate a statue, painting or thangka please contact the Great Stupa office.

KWAN YIN BLESSING & CENTRE KITCHEN OPENING MAY 27

May 27 will see two important milestones at the Great Stupa Exhibition Centre, the first event will be the blessing of the new Kwan Yin statue by Venerable Thich Phuoc Tan and Geshe Konchok Tsering.

This statue has been made in Vietnam from white marble and was personally chosen for the Great Stupa by Venerable Phuoc Tan. This will be followed by the official opening of the Great Stupa Exhibition Centre kitchen by Mr George Lekakis, Chairperson of the Multicultural Commission of Victoria. The work on the kitchen has been done by Dennis Kenny and other volunteers and has been largely funded through a grant from the Victorian Multicultural Commission.

PROTECTOR ROOM PARTNERS FUND LAUNCHED

A new fund has been launched to raise funds for the Protector Room of the Great Stupa.

The Protector Room is located in the North West corner of the Great Stupa. This corner of the Great Stupa was identified as being very important by Fung Shui expert, Lillian Too. The Protector Room will house special deities who will exert a positive, protecting energy over the Great Stupa.

Ten Protector Room Partners are being sought. Each partner will contribute a donation of \$10,800. Their names will be displayed in perpetuity on the walls of the Protector Room. As major benefactors they will be recognised at the major puja which is held at the Great Stupa for as long it exists.

LIBRARY PILLARS OF WISDOM FUND LAUNCHED

Another new fund has been launched to raise funds for the Library of the Great Stupa.

The Library is part of Lama Yeshe's vision for the Great Stupa. It will house Buddhist texts and will be available for students and scholars. Writings from other spiritual traditions, including Bon will also be kept in the library.

Ten Library Pillars of Wisdom are being sought. Each "Pillar" will contribute a donation of \$10,800. Their name will be displayed in perpetuity on the walls of the Library. As major benefactors they will be recognised at the major puja which is held at the Great Stupa for as long as it exists.

REJOICE! MARBLE KWAN YIN ON ITS WAY

The Great Stupa Exhibition Centre will soon be home to a 2 metre high Avaloketishvara (Kwan Yin) statue that has been carved out of solid marble in Vietnam.

The statue was personally chosen for us by Venerable Thich Phuoc Tan of Quang Minh temple.



Kwan Yin statues at the Vietnam marble factory

SEE YOU AT SINGAPORE VESAK CELEBRATIONS

Friends of the Great Stupa from Singapore are reminded that Ian, Judy and Belinda will again be present at the Vesak celebrations May 12 to 14 at the open space near Aljunied MRT.

INAUGURAL ANNUAL BENEFACTOR'S PUJA AUGUST 26

The inaugural annual benefactor's puja, in honour of all Great Stupa benefactors will be held at the Atisha Centre Gompa, 2pm, Saturday August 26, 2006.

This benefactor's puja will be held for as long as the Great Stupa exists. At the event the names of all major benefactors (Life-Long Friends and above) will be recalled and the merits will be dedicated for all benefactors. The annual Benefactors Puja will be led by Gen'la with all Sangha invited to participate.

All benefactors are invited to attend. Please make a day of it...bring your lunch and visit the Great Stupa Exhibition Centre.

BLESSING OF THE ASHES CEREMONY MAY 27

The Blessing of the Ashes ceremony will be led by Gen'la at 11am Saturday May 27, 2006. This ceremony, known as a Jung Wa, is conducted for those who are having memorials at the Great Stupa.

The ceremony will be held at the Great Stupa Exhibition centre. Friends and family of the deceased are especially invited to attend.

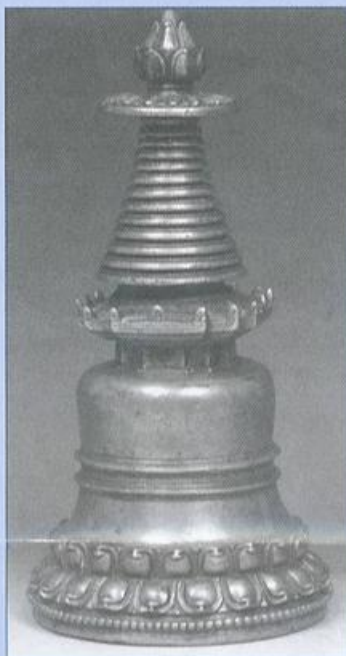
MEMORIALS AT THE GREAT STUPA OF UNIVERSAL COMPASSION

At the Great Stupa we are making it possible for the bereaved to provide various memorials for family and friends. Our aim is to provide options that will suit the wishes and budgets of most people.

As part of this process we undertake to organise the blessing of the ashes of the deceased and the provision of bronze plaques.

We are conscious that like the Great Stupa, the memorials are to last a very long time. An allowance is included for the long-term maintenance of the memorials.

Please contact the Great Stupa office for more details.



memorial stupa

JON JOINS THE TEAM

Jon De Sensi has joined the Great Stupa team and will be taking on many of the administration tasks previously performed by Judy.

Judy will be concentrating her efforts on the Jade Buddha project and overseeing the Great Stupa Exhibition Centre but hopes to maintain her close personal connections with Great Stupa benefactors.

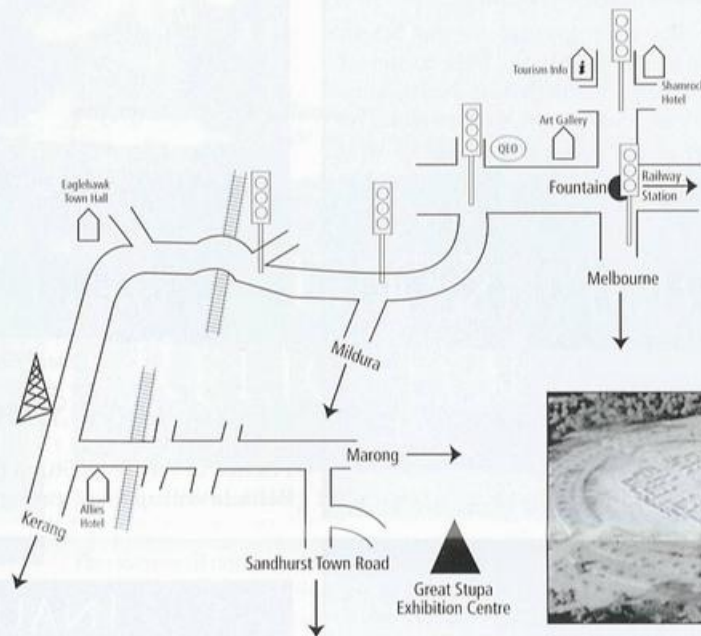
Jon, who brings with him a wide deal of experience in financial, administration and Web design and construction, has recently moved to central Victoria with his wife Annabel. Jon can be contacted at jon@stupa.org.au



VISITING THE GREAT STUPA SITE AND EXHIBITION CENTRE

You are welcome to visit us, just remember that the Exhibition Centre is open weekends and public holidays only.

- From Melbourne take Tullamarine Freeway and then Calder Highway. Follow signs to Bendigo.
- In Bendigo, drive to the fountain at the centre of the city and turn left (West) and follow the signs to "Eaglehawk" / "Loddon Valley Highway" / "Kerang".
- In Eaglehawk veer left at Town Hall (stay on major road) and travel approx 3 kms to Allies Hotel, turn left and travel approx 3 Kms to Sandhurst Town Road and follow signs to Atisha Centre and The Great Stupa Exhibition Centre.



Aerial photo of the Great Stupa site.

THE GREAT STUPA OF UNIVERSAL COMPASSION

The Great Stupa of Universal Compassion is being built at Atisha Centre near Bendigo. It will be the same size and design as the Great Stupa of Gyantse that was built in Tibet in the 15th century.

Being 50 metres square at its base and rising to a height of nearly 50 metres it will be the largest stupa in the western world.

The Great Stupa of Universal Compassion will be a symbol of peace in the world. It will also be a place of pilgrimage for Buddhists of all traditions.

Located next to the Stupa are a meditation centre and a monastery.

The Great Stupa of Universal Compassion
43 View Street Bendigo VIC 3550 Australia
Phone (+613) 5444 2440
Fax (+613) 5444 2422.
E-mail info@stupa.org.au

The Great Stupa is a member of the Foundation for the Preservation of the Mahayana Tradition