

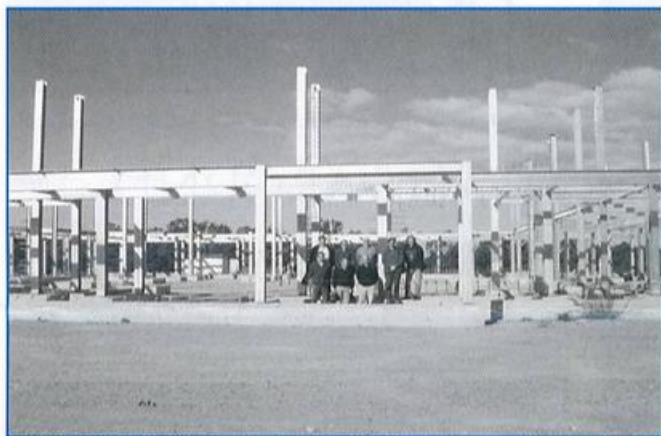
If undelivered return to:
43 View Street, Bendigo VIC 3550
Australia

CHORTEN

STUPA EDITION ❖ No. 26

The Great Stupa of Universal Compassion is being built near Atisha Centre in Australia. It will be the same size and design as the Great Stupa of Gyantse in Tibet. This will make it the largest Stupa outside of Asia.

99 BENEFACTORS NEEDED TO BUILD PHASE 2 BEFORE HIS HOLINESS ARRIVES



The magnificent first phase steelwork is complete. How wonderful it would be to have the steel soaring up four or five levels above the ground and some concrete walls erected by the time His Holiness arrives. To fund the construction of this next phase we require a further \$280,000. **Our goal is to raise these funds from 100 precious benefactors each donating \$2,800.** We already have our first donation – so we only need 99 more! If you would like to donate please contact Ian Green, the Director at the Great Stupa office.

Members of the Great Stupa board with steel framework of Great Stupa: left to right front row: David Andrews, Wayne Thomson, Tom Castles. Left to right back row: Brian Ashen, Judy Green, Ian Green, Jon Breukel and Garrey Foulkes (missing is Salim Lee).

CITY OF BENDIGO MAJOR SPONSOR OF VISIT BY HIS HOLINESS

The City of Greater Bendigo has announced that they will be the major sponsor of the visit by His Holiness to Bendigo on June 7, 2007. The sponsorship is to the value of \$20,000, with \$15,000 in cash and \$5,000 in kind.

The City will also host a civic reception for His Holiness in the majestic Bendigo Town Hall. Two streets outside the Town Hall will be closed to enable an estimated 2,000 people to witness His Holiness' address to the Civic Reception on large video screens. It is expected that students from local schools will also be present.

Ian Green of the Great Stupa said "There are many costs in staging the visit and the contribution by the City of Greater Bendigo is very appreciated. It will help us to keep the price of tickets down."

**DALAI LAMA
REGISTRATIONS CLOSING
SOON!**

His Holiness the Dalai Lama will bless the Great Stupa site and consecrate the Guru Rinpoche statue on June 7 2007. This will be His Holiness' first official duty in Victoria. His Holiness is expected to arrive mid afternoon and to stay for up to 2 hours.

There are very limited numbers of seats available for this event. To register your interest in obtaining a ticket for this event at the Great Stupa please register on-line at www.stupa.org.au or phone (03) 5442 3200.

THE JADE BUDDHA PROJECT IS UNDERWAY

Thanks to the wonderful support from Singapore and Australia donations and loans of US\$300,000 have been received. This money will be paid as a deposit on the boulder so that we can commence carving the Jade Buddha in early 2007.

Ian and Judy are currently (early December '06) in Thailand negotiating the carving of the Jade Buddha. Other good news has been received from Lama Zopa Rinpoche who has confirmed he will attend a fundraising event in early 2007 to raise funds for the project.

Once carved the Jade Buddha will be toured throughout Asia and Australia before finally coming to the Great Stupa site. Donations to the Jade Buddha project can be made at the Great Stupa office.



Lama Zopa Rinpoche with a beautiful jade mala

JADE BUDDHAS AND JADE MALAS NOW AVAILABLE

Magnificent polar jade malas can be obtained from the Great Stupa office.

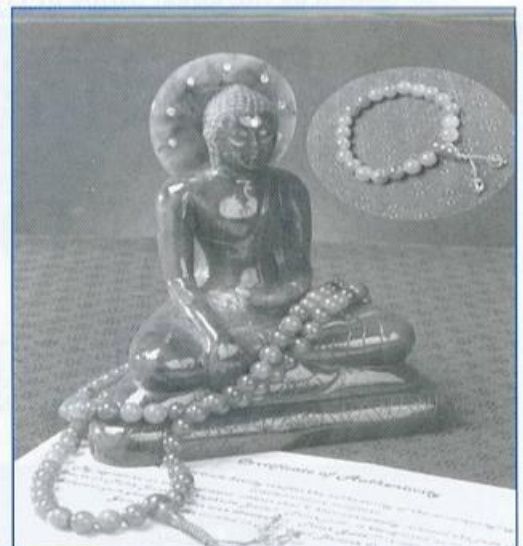
108 bead malas are available for a donation of AUS \$250 and wrist malas are available for AUS \$80. The malas are produced from AAA Gem-quality Polar Jade.

We have a few 108 bead and wrist malas blessed by Lama Zopa. Slightly less ornate than the seven malas which went to donors of \$1,000 at the benefactors lunch with Rinpoche. they are available for a donation of \$750 for the long mala, and \$188 for the wrist size. We also have Lama Zopa "Z" pendants on a jade and semi precious stone necklace.

Enquiries should be addressed to

Judy Green - The Great Stupa, 43 View Street, Bendigo VIC 3550 Australia.

E-mail: judy@stupa.org.au



Beautiful Jade Buddhas and Jade Malas now available

RETAINING WALLS AROUND THE GREAT STUPA



Grace Molloy, daughter of Alan and Jenny, is a proud owner of a jade mala.

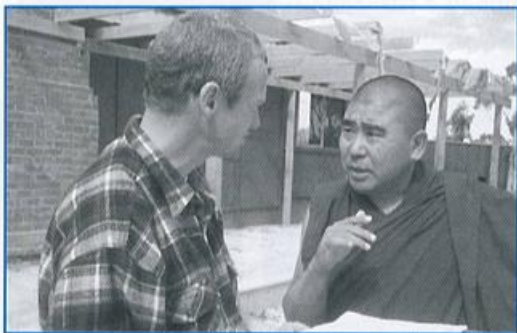


Work is expected to commence soon on the retaining walls that surround the three levels of the circumambulation paths around the Great Stupa. Two designs have been submitted to Lama Zopa for his selection. One of these designs is shown in the illustration above.

These retaining walls will carry the 100,000 stupas that Rinpoche has requested be placed around the Great Stupa. On top of the walls will be Memorial Stupas for those who are leaving their ashes at the Great Stupa.

Altogether the retaining walls are 1 kilometre in length and are expected to cost around \$250,000. Donations to the walls can be made at the Great Stupa office.

GURU RINPOCHE STATUE TO BE FILLED AND GILDED FOR HIS HOLINESS



Thupten Khidup, seen here with Noel Maddock has started preparing for the Guru Rinpoche consecration

Thupten Khidup a ritual master (Lama Gyupa) from Gyuto Monastery has arrived at the Great Stupa. His first important task is to prepare the 3.8 metre high Guru Rinpoche statue for consecration by His Holiness the Dalai Lama on June 7. Thupten Khidup will be based at the Great Stupa for at least 2 years.

Opportunities to donate to this auspicious event include the cost of printing mantras \$5,000, shipping mantras from India \$1,000 and constructing the throne for Guru Rinpoche \$4,000.

We rejoice that the gold leafing, fragrant wood shavings and sokshing (life-force tree) are fully donated. You can also donate items for the consecration including photos of precious teachers, relics of precious teachers and precious dharma texts such as the Prajnaparamita.

Donations should be directed to the office at 43 View Street Bendigo or can be made on line at www.stupa.org.au

SYDNEY HOLY RELIC TOUR 2006

The Great Stupa Holy Relic Tour of Sydney was held from Saturday August 5 to Sunday August 20 2006 at Van An Meditation Centre, 215 Redmayne Road Horsley Park.

The Tour was a great success and we offer our sincere thanks to our friends in Sydney including Geshe Dawa, Geshe Samten, Abbot Thich Quang Nghiem, Abbot Phra Mana, Lozang Chopel, Mr Bang, Bich Phan, Anh Mai, Phu & Ahn Nguyen, Thi P Anh Ho, Mr Itthipol Sooksavee, Nhan Thanh Tran and Chau Nguyen.

photos below showing some of the activities during the Sydney tour

RELIC TOURS COMING
UP FOR MELBOURNE,
BRISBANE, GOLD COAST,
SUNSHINE COAST,
BYRON BAY AND SYDNEY

Plans have started for tours of Melbourne (August 2007), Brisbane, Gold Coast, Sunshine Coast, Byron Bay (December 2007 – January 2008), Sydney (August 2008). For further information please contact the Great Stupa Office: info@stupa.org.au or check our website www.stupa.org.au.

TWO PROTECTOR ROOM PARTNERS FOUND

Ten Protector Room Partners are being sought. Each partner will contribute a donation of \$10,800. Their name will be displayed in perpetuity on the walls of the Protector Room.

LIBRARY PILLARS OF WISDOM FUND LAUNCHED

Ten Library Pillars of Wisdom are being sought. Each "Pillar" will contribute a donation of \$10,800. Their name will be displayed in perpetuity on the walls of the Library. As major benefactors they will also be recognised at the major puja which is held at the Great Stupa for as long as it exists.



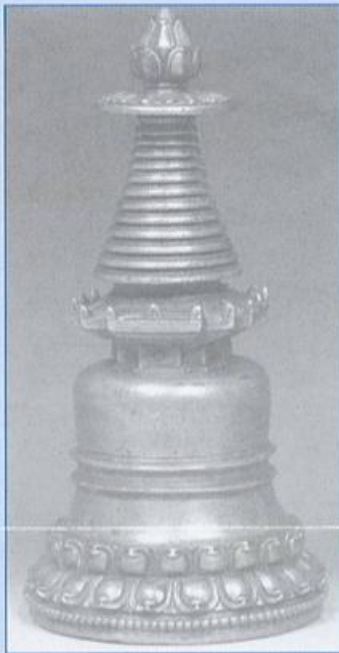
MEMORIALS AT THE GREAT STUPA OF UNIVERSAL COMPASSION

At the Great Stupa we are making it possible for the bereaved to provide various memorials for family and friends. Our aim is to provide options that will suit the wishes and budgets of most people.

As part of this process we undertake to organise the blessing of the ashes of the deceased and the provision of bronze plaques.

We are conscious that like the Great Stupa, the memorials are to last a very long time. An allowance is included for the long-term maintenance of the memorials.

Please contact the Great Stupa office for more details.



memorial stupa

LILLIAN HANKEL JOINS THE TEAM

We have recently appointed Lillian Hankel as the Office Manager of The Great Stupa. Lillian replaces Jon De Sensi who will continue with the Great Stupa in a part time role as the person in charge of finances and our website.

Originally from Canada, Lillian has been trained as a museum curator and has worked in Canada, Japan, Western Australia and Melbourne. Recently she was a resident of Tara Institute. She is elated to work at the Great Stupa as a way of helping Lama Zopa Rinpoche realise one of his great works.

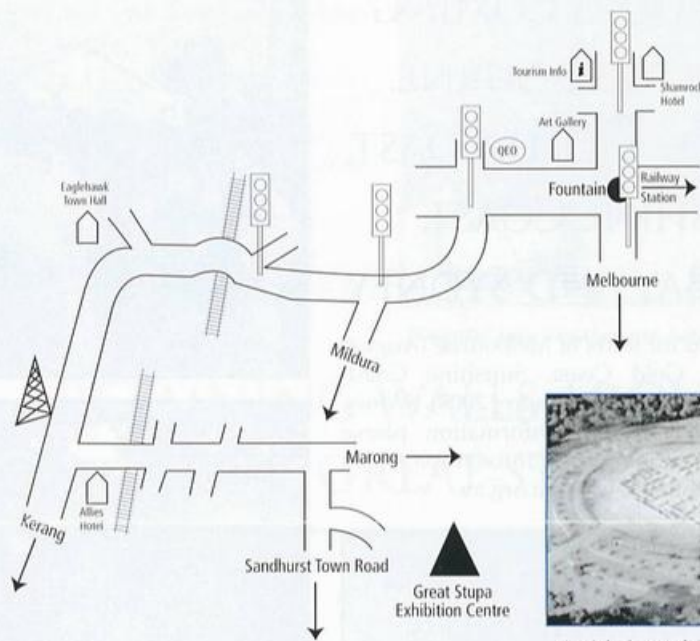


Lillian Hankel

VISITING THE GREAT STUPA SITE AND EXHIBITION CENTRE

You are welcome to visit us, just remember that the Exhibition Centre is open weekends and public holidays only.

- From Melbourne take Tullamarine Freeway and then Calder Highway. Follow signs to Bendigo.
- In Bendigo, drive to the fountain at the centre of the city and turn left (West) and follow the signs to "Eaglehawk" / "Loddon Valley Highway" / "Kerang".
- In Eaglehawk veer left at Town Hall (stay on major road) and travel approx 3 kms to Allies Hotel, turn left and travel approx 3 Kms to Sandhurst Town Road and follow signs to Atisha Centre and The Great Stupa Exhibition Centre.



Aerial photo of the Great Stupa site before the steel framework.

THE GREAT STUPA OF UNIVERSAL COMPASSION

The Great Stupa of Universal Compassion is being built at Atisha Centre near Bendigo. It will be the same size and design as the Great Stupa of Gyantse that was built in Tibet in the 15th century.

Being 50 metres square at its base and rising to a height of nearly 50 metres it will be the largest stupa in the western world.

The Great Stupa of Universal Compassion will be a symbol of peace in the world. It will also be a place of pilgrimage for Buddhists of all traditions.

Located next to the Stupa are a meditation centre and a monastery.

The Great Stupa of Universal Compassion
43 View Street Bendigo VIC 3550 Australia

Phone (+613) 5442 3200

Fax (+613) 5444 2422.

E-mail info@stupa.org.au

The Great Stupa is a member of the Foundation for the Preservation of the Mahayana Tradition